

Water filtration kit. Brief assembly instructions.

Warning. The kit is intended for use by a professional plumber or an advanced DIY home handyman with the skills to install such equipment. The manufacturer and seller are not responsible for any direct or indirect damage caused to the user or third parties. The kit does not include fixing and sealing elements. The color and construction details of the elements may vary from batch to batch.

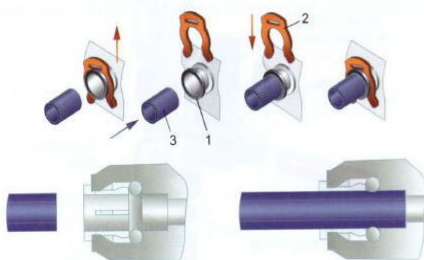
1. Select and mark the position of filters and other parts so that they are located at a minimum distance from each other. Take into account that a piece of one of the hoses will have to be cut off to connect the filters to each other.
2. Remove the plugs from the filters (if any) and screw in the fittings (adapters), using PTFE tape or plumber's thread for sealing.
3. Fix the filter holders in the intended place.
4. Shut off the water supply. Install inlet fitting with valve, using PTFE tape or plumber's thread to seal if necessary.
5. Install a clean water faucet.
6. Connect the inlet fitting with the first filter (5 micron sediment, lighter), observing the direction of water flow (see arrow on the filter).
7. Connect the first filter to the second filter (GAC / CB, more heavy) with a piece of tubing of suitable length, observing the direction of water flow (see arrow on the filter).
8. Connect the second filter to the clean water faucet with a piece of tubing using the plastic bushings provided with the faucet.
9. Secure both filters properly to prevent any movement during travel.
10. Open the water source and check for secure connections. Repair leaks if necessary. Make sure that the water pressure in the system does not exceed the allowable pressure indicated on the filters. If the pressure exceeds the permissible pressure, the filters must not be operated. The pressure can be reduced by using a pressure limiter.
11. Open a clean water tap and flush the filter assembly for 10-15 minutes. Please note that the optimum flow rate through the filters is no more than 2 liters per minute - at this flow rate filtration is of the highest quality.

During the first few days, the water may contain small air bubbles coming out of the filters and small particles of food activated carbon. This is normal and does not require any additional action.

Connection of JG tubes

Pull the locking clip (2) off the plastic plug (1). Then install the previously wetted end of the tube (3) into the fitting piece approx. 15 mm up to the stop. Next, put the locking clip (2) back.

Make sure that the tube (3) is tightened correctly: the tube should not be pulled out by force greater than 8-10 kgf.



Disconnection of JG tubes

Pull the locking clip (2) off the plastic plug (1), then pull the tube (3) out by applying pressure on the face of the connecting piece. To apply pressure, use the tube disconnection key (4) included in the water filter set.

