

AQUAPHOR[®] water filters



PRODUCT CATALOG 2020

Aquaphor markets

60 countries

16
million
of families

in the world are using **AQUAPHOR** water purification systems

AQUAPHOR international corporation is the rightful world leader in the production of household water treatment systems and the development of water treatment technologies. Twenty years of introducing innovative solutions, continuous expansion of manufacturing capacity, as well as medium and long-term planning have ensured that the **AQUAPHOR** trademark is recognized and loved in many countries around the world.

The impeccable quality of **AQUAPHOR** products is backed by the world's leading certification bodies, while the innovative technologies used in the manufacturing of **AQUAPHOR** filters are protected by more than 70 patents in Russia, the United States, Germany and the United Kingdom.

A TRULY GLOBAL BRAND



THE WORLD LEADER IN THE PRODUCTION OF HOUSEHOLD WATER FILTERS

WORLD RECOGNITION

16,000,000 families in 44 countries around the world are using AQUAPHOR water filters. AQUAPHOR has dealers and branch offices in 21 countries.



PRODUCTION FROM "A" TO "Z"

AQUAPHOR runs its research, manufacturing and marketing divisions in Russia, Europe and the United States. Our technology development takes place in modern laboratories and involves leading research institutes and specialists from the United States, Germany, Russia and other European countries.



AQUAPHOR: product quality guarantee

AQUAPHOR operates in compliance with the most stringent international standards (NSF and EN), constantly raising the bar for the quality of its products. AQUAPHOR product quality has the certification of "Compliance with Technical Regulations" (Russia), SGS (Switzerland) and NSF (USA).



AQUAPHOR is constantly improving the filter manufacturing technologies

AQUAPHOR technologies are protected by 50 patents in Russia, 9 in the United States, 6 in the EU and the UK, 5 in China and 1 in India.

AQUAPHOR CORPORATION

"Drinking water is a human right that is essential for the full enjoyment of life and all human rights," — UN general assembly resolution.

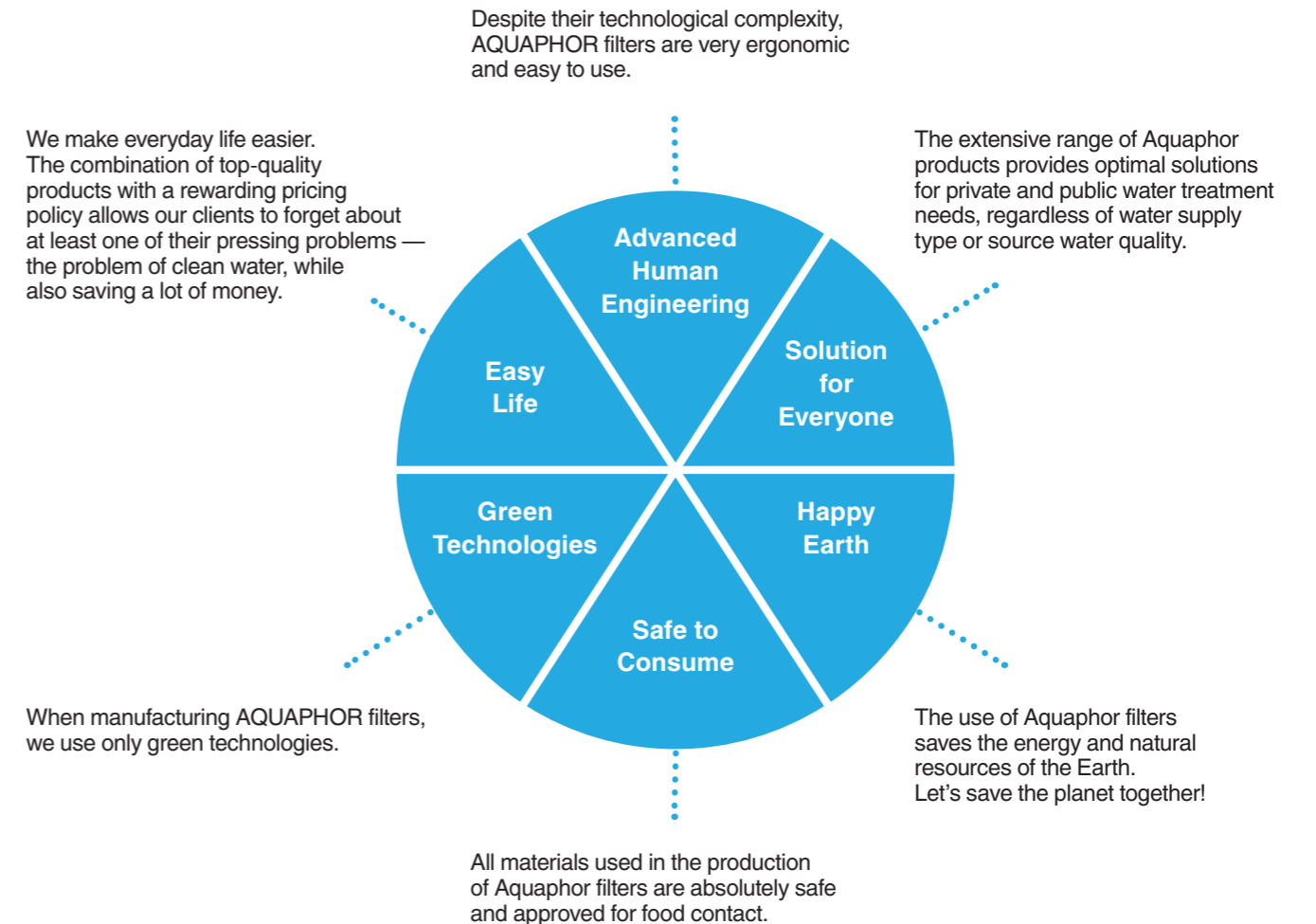
AQUAPHOR MISSION STATEMENT: TO MAKE WATER OF THE HIGHEST QUALITY AVAILABLE TO EVERY PERSON ON EARTH

Over the course of twenty years AQUAPHOR strategy remains unchanged: developing and producing the world's best water treatment systems for the maximum number of consumers. To achieve this goal, AQUAPHOR carries out the entire production cycle — from scientific concept to mass production and sales, allowing the company to fully control the quality and availability of its product.

The use of the latest technology and cutting-edge discoveries in the field of water treatment, strict quality control, wide range of products and clear marketing strategies allowed AQUAPHOR to achieve international success and increasing recognition around the world.

AQUAPHOR PRINCIPLES

Throughout its business AQUAPHOR strictly adheres to the following principles:



AQUAPHOR DIVISIONS

AQUAPHOR international corporation is the world's largest manufacturer of fiber materials for household water treatment and water purifiers based on these materials. The company's research and development, manufacturing and marketing divisions are located in Russia, Europe, the United States and China.



Russia, St. Petersburg. AQUAPHOR headquarters



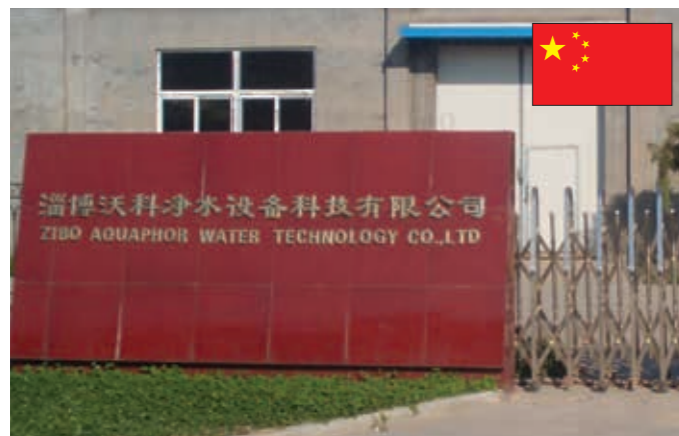
Russia, Zavolzhsk. Aqualen™ manufacturing plant



Russia, Ust-Izhora, St. Petersburg. Water filter production plant



Estonia, Sillamäe. AQUAPHOR filter manufacturing in Estonia



China, Zibo. Analytical laboratory and AQUAPHOR branch office in China

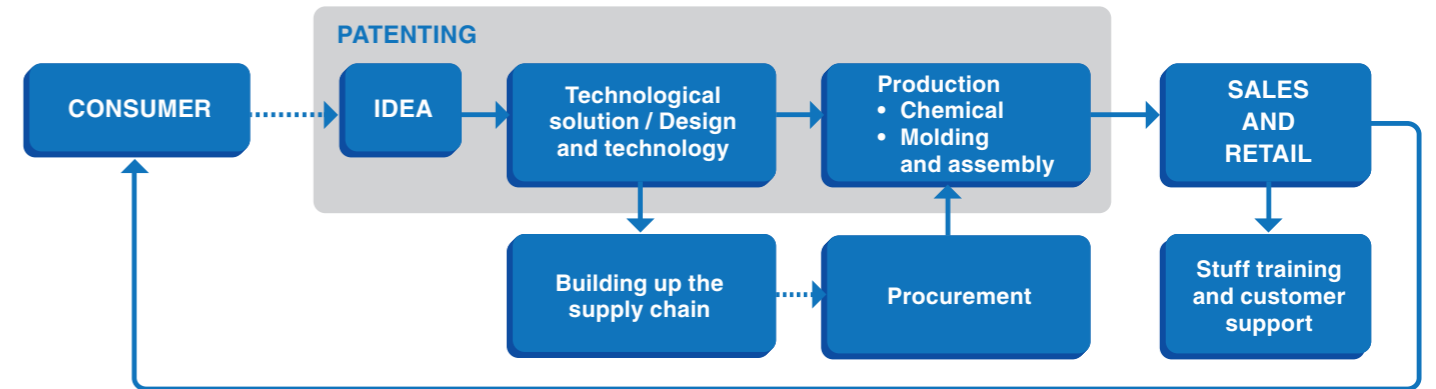


Estonia, Narva. AQUAPHOR filter manufacturing in Estonia

The well-established global management system allows the manufacturing sites located in different parts of the world to effectively interact with each other.

AQUAPHOR PRODUCTION SITES

Aquaphor is one of the few water filter companies in the industry that keeps its entire production chain in-house. Quality control is carried out at every stage, from thorough examination of the consumer needs to the finished product quality testing and launching.



ISO 9001:2015 certification

The quality of Aquaphor's manufacturing has been certified ISO 9001:2015 by SGS (Switzerland), the world's leading inspection, verification, testing and certification company.



NSF certification (USA)

NSF International is a product testing and certification organization, the only of its kind chosen for collaboration by the World Health Organization (WHO), contributing to WHO's Guidelines for Drinking-water Quality.

THE STORY OF SUCCESS

- 1992** Aquaphor is established in Saint Petersburg. Faucet filtration system Aquaphor B300 is launched as a first commercial line.
- 1993** Aquaphor products are certified by Scitec Research, a laboratory that provides chemical analyses in the area of water quality (Lausanne, Switzerland).
- 1994** Launch of the first production line for Aqualen™ sorbent. Aquaphor B150 becomes a category pioneer for stationary under-counter purifiers with a separate faucet in Russia.
- 1998** Company debut at Aquatech, Amsterdam, the world's leading trade exhibition for process, drinking and waste water. Original Aquaphor cartridge for a jug filter is developed. A range of patents is registered in the USA.
- 1999** Launch of several molding and assembly lines for Aquaphor filter jugs.
- 2000** Launch of the first, and the only in Russia, extrusion production line for the first generation of CarbFiber Block cartridges. The plant gets its first molding machine for under-counter water purifiers.
- 2002** The second generation of a unique sorbent agent Aqualen™ 2 (Aqualen™) is developed. All sorbion mixes containing Aqualen™ are patented. Production capacities are substantially expanded at the St. Petersburg plant.
- 2004** CarbFiber block (CBF) is introduced to international water industry professionals at Aquatech, Amsterdam.
- 2006** First domestic drinking water purifier with the cutting-edge hollow fiber technology.
- 2011** The new plant for Aqualen™ production is put in operation in Zavolzhsk, Russia. An agreement with Hague Quality Water (USA). Aquaphor Morion, the innovative reverse osmosis system is introduced to the US market.
- 2012** Launch of filter cartridge production line at a new manufacturing plant in Sillamae, Estonia.
- 2014** New carbon block factory is put in operation in Narva, Estonia.
- 2015** RO 201 is created, the first model in the new generation of Aquaphor membrane purifiers.
- 2016** Production of A100 the jug cartridge using the hollow fiber technology. Water softener A800 is developed in collaboration with the Hague company (USA).
- 2017** New A5 jug cartridge with magnesium mineralizer is available. RO 201 is manufactured at a commercial scale. A two-membrane system RO 203 for small enterprises is launched.
- 2018** The latest ISO 9001:2015 certificate is received, which guarantees compliance with highest international standards to provide a strong customer focus, the process approach and continual improvement. All for the benefit of millions of families around the world who drink clean and tasty water purified by the Aquaphor water filters.

AQUAPHOR TECHNOLOGIES

AQUAPHOR innovative technologies

The company's original strategy was to develop and use its own high-end technologies. Today, AQUAPHOR sets the global standard in household water purification.

Currently, AQUAPHOR is the world's largest manufacturer of selective fibrous ion-exchange sorbents, while their use in household filters is the company's signature, as well as its know-how.

AQUAPHOR corporation runs several R&D and analytical laboratories. The research and development laboratories create the prototypes of new water treatment systems, develop new sorbents and composites, introduce emerging technologies. The analytical laboratories carry out daily, routine quality control of raw materials and supplies, as well as the final products.

AQUAPHOR invests more than 10 million dollars a year into its R&D.

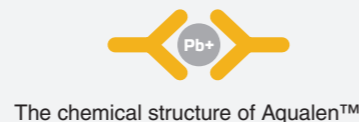
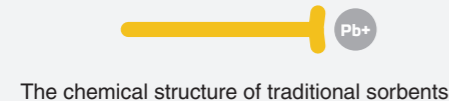
In the 20 years of its research and development work, the company presented the world with a number of unique technologies:

AQ  **Aqualen™**
patent No. 20704036 (RF), Patent No. US6514413 (USA)
Aqualen™ is a unique fibrous chelating ion-exchange sorbent.

Aqualen™ irreversibly binds heavy metal ions. It has superior adsorption capacity. Aqualen™ sorption surface area is 33 times larger than that of the conventional ion-exchange sorbents. It is equally effective in water of any hardness.

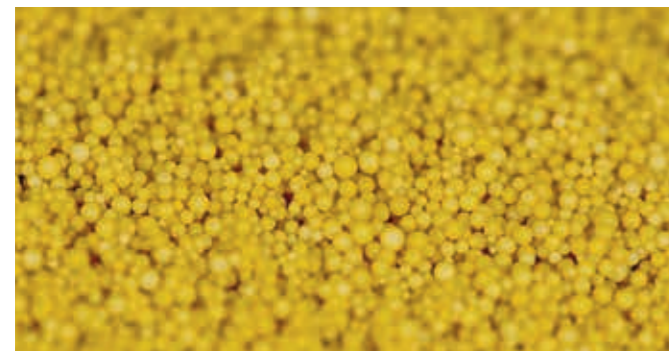
The filters based on Aqualen™ technology are more than 10 times faster and more reliable than the conventional filters.

The word "chelate" comes from the Greek word "chēlē", which means "a claw". In their chemical structure the Aqualen™ functional groups resemble the claws. The Aqualen™ "claws" snatch heavy metal ions out of the water and hold them in a death grip.



Distinctive physical qualities of Aqualen™


When compared to the conventional granular ion-exchange resin used in the conventional filters, Aqualen™ technology's qualitative difference is in the increase of the sorption surface area, thanks to the geometry of the material.



Granule diameter: 700 microns
Surface area: 10 cm²/g



Fiber diameter: 10 microns
Surface area: 1000 cm²/g

IAM  **Isotropic Adsorption Matrix**
patent No. 2429067 (RF)

IAM is a manufacturing technology of a water filtration medium with high-density fine absorbents.

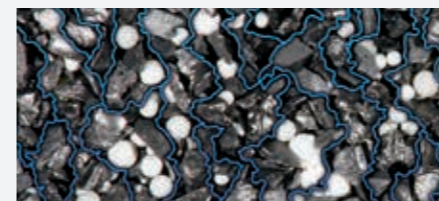
When Aqualen™ is mixed with granulated absorbents, IAM technology creates a synergistic effect, which means that the sorption mixture attains the unique qualities not present in the original components.

IAM prevents the channeling effect and ensures uniform water flow distribution throughout the filter.

What is the "channeling effect?"



A typical water filter has two problems. First of all, no granules larger than 0.5 mm can be used — too much resistance will simply prevent the water from flowing through the filter. Secondly, the water flow moves the granules not attached to each other, creating channels of low resistance, also called washouts. As a result, part of the water passes through the filter without purification. This is called the "channeling effect".




Hydrophilic Aqualen fibers in AQUAPHOR filters ensure an even distribution of water and low hydrodynamic resistance. This allows to apply finely divided activated carbon, which improves the purification quality. The IAM technology prevents the channeling effect — Aqualen fibers are similar to a network of roots in the soil and firmly secure the granules in place. As a result, every drop of water comes in contact with the adsorbent and is thoroughly purified.

DFS  **Dynamic Fixation of Silver**
patent No. 2172720 (RF)

DFS technology is the original method of applying silver in its most active ionic form to Aqualen™ fibers.

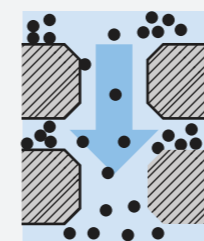
DFS significantly reduces the amount of silver in AQUAPHOR filters. At the same time, it notably increases the bactericidal effects as compared to conventional filters, which use metallic silver deposited on activated carbon.

Thanks to DFS technology, AQUAPHOR filters meet all the European health and sanitation standards.

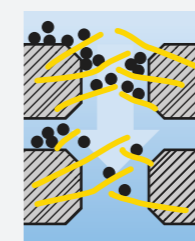
CFB  **CarbFiber Block**
patent No. 2282494 (RF)

CarbFiber Block (CFB) is a manufacturing technology of water filtration media with different degrees of porosity and is designed for water of any pollution level.

CFB significantly increases the lifespan of the replacement AQUAPHOR filters without compromising the purification quality.



Carbon block



CarbFiber block

What is a "CarbFiber Block?"

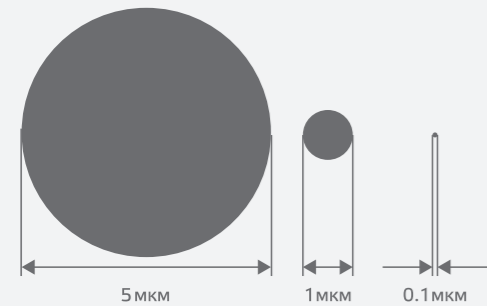
Carbon block is a porous structure obtained by sintering the granulated activated carbon and micronized polyethylene. The CFB technology allows adding Aqualen to the mix, resulting in increased hydrophilicity of the carbon block.

CFB filters purify without any drop in water pressure, which is particularly important when treating water for washing machines, dishwashers, gas heaters and boilers.

HF **Hollow Fiber**
patent No. 2410336 (RF)

The cutting-edge hollow fiber technology helps to create microfiltration cartridges — hollow fiber membranes have a huge filtering surface while maintaining small dimensions and a pore diameter of 0.1 micrometers.

The hollow fiber is a universal shield. It provides a 99.99% guarantee of cutting off germs and bacteria, Giardia cysts and other intestinal parasites, removing the undissolved impurities and sediments as small as 0.1 micrometer.



Tomorrow starts today. Hollow fiber is already part of AQUAPHOR filters.

Each hollow fiber membrane is a tubule with porous walls. The water is filtered through the pores about 600–800 times thinner than a single human hair, too small for even the tiniest impurities to pass through. Made out of the most inert material, polyethylene, hollow fiber membranes are completely environmentally friendly and safe at the production stage, as well as throughout their life cycle. AQUAPHOR is the only brand of water filters in Russia to use hollow fiber membranes.

ICM **Iterative Computer Modelling**
patent No. 2421270 (RF), No. 2371234 (RF)

ICM technology ensures that the manufacture of AQUAPHOR filter cartridges and components uses an optimum polymer material.

AQUAPHOR filters have a five-fold durability margin, allowing them to withstand up to 45 atmospheres of pressure and tolerate pressure surges.

HSS **Hazard Safe Service**
patent No. 2333779 (RF), Patent No. GB2426215 (UK), Patent No. US7695615B2 (USA)

HSS technology eliminates the consumer's contact with spent absorption media and dangerous contaminants absorbed during the filter's operation.

AQAUPHOR filters set the global standard for consumer health and safety.

Click & Turn

Thanks to the Click & Turn technology we developed, AQUAPHOR filters are extremely easy to use.

AQUAPHOR stationary water filters are so easy to assemble that even a child can replace the used cartridges.



HOW OUR TECHNOLOGIES CONTRIBUTE TO A BETTER LIVING

AQ	Binds heavy metals	Efficient in any conditions	Irreversibly traps contaminants	Beneficial minerals stay in water
IAM	Reduces chlorine and organic compounds	Reduces carcinogens	Traps free radicals	
	High speed of water flow	Every drop of water is purified	Protects from allergens	
DFS	No antibiotics or biocidal additives	Efficient and safe silver form		
CFB	Longer filtration life	High efficiency	Protects from water quality fluctuations	
HF	Features 99.99% protection from bacteria	Elimination of cysts	Removes contaminants down to 0.1 micron	
ICM	Withstands pressure up to 45 atmospheres	Hydroshock protection	Five-fold margin of durability	
Click & Turn	No professional tools required	Easy maintenance		
HSS	Excludes contact with contaminants			
AHE	Does not require specialized tools	Does not require specific skills	Quick installation	Easy maintenance
STC	Hypoallergenic materials	In compliance with DIN (Germany)		

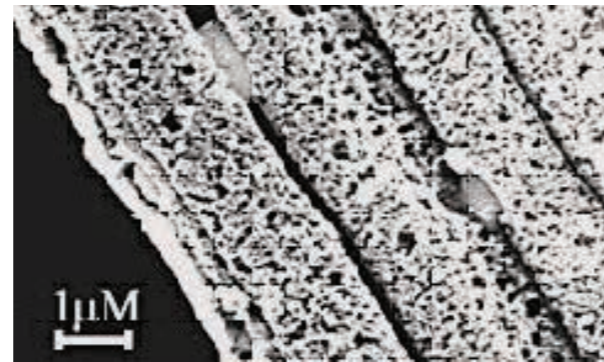
SORBENTS

AQUALEN® ACTIVATED CARBON FIBER

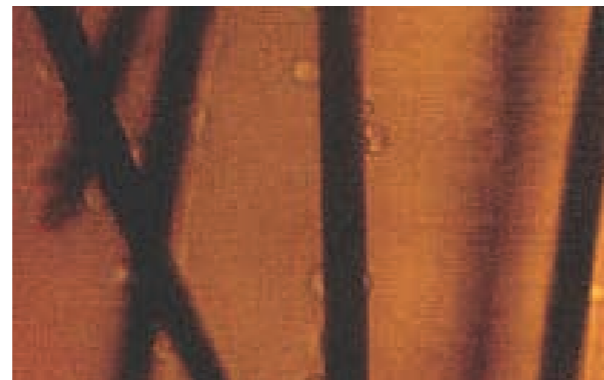
AQUALEN is an activated carbon fiber material. AQUALEN has superior adsorption capacities toward organic impurities and toxic heavy metal ions. AQUALEN provides a rate of adsorption (two orders of magnitude higher than granular adsorbents) and an ability to irreversibly remove even trace concentrations of heavy metals and toxic organic impurities, such as pesticides, trihalomethanes, chlorophenols and pharmaceuticals

The high porosity and ion-exchange properties of AQUALEN further enhance its adsorption superiority compared to granular and powdered activated carbon and ion-exchange resins. The main reason is the small diameter of the fiber and, therefore, very large outer surface area per unit weight (one to two order of magnitude larger outer surface areas than commercially available powdered and granular carbons and ion-exchange resins). Very fine powder adsorbents can not be used in a packed-column that uses flow-through technology due to their resistance to high flow rates. The same fiber diameter fibrous adsorbents exhibit much less flow resistance due to the fibers' geometric properties and flexibility

Another significant advantage of AQUALEN is its bactericidal properties and its ability to adsorb and to kill bacteria and parasites, e.g., E. Coli and Giardia Lamblia.



AQUALEN fiber



Bacteria cells attached to the AQUALEN fiber surface

General properties of AQUALEN:

Material structure:	Cellulose-based activated carbon fiber (ACF)
Functional Groups:	Carboxylic, nitrogen-containing groups
Physical Form:	Fibers
Dimensions (mm):	0.006 – 0.01 (diameter)
Pore volume (cm³/g):	0.5

Adsorption capacity (methylene blue) (mg/g):	450
Adsorption capacity (phenol) (mg/g):	260
Anion-exchange capacity (meq/g):	0.45
Cation-exchange capacity (meq/g):	0.75
Adsorption capacity (lead) (mg/g):	12.5

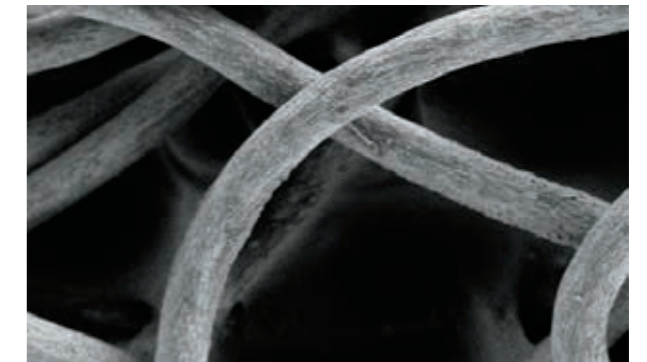
AQUALEN-As special ion-exchange fiber

AQUALEN-As is a unique, promising, specialized fibrous adsorbent based upon a modified PAN backbone impregnated with iron hydroxides. Modifications to the fibers' surface with iron hydroxides allow it to adsorb a wide range of toxic impurities of different variations.

The most interesting feature of AQUALEN-As is its ability to irreversibly adsorb various forms of arsenic along with a wide range of other harmful impurities of anionic and cationic character.

AQUALEN-As demonstrates a very high rate of adsorption due to the large outer surface area of fibrous material and can be easily regenerated.

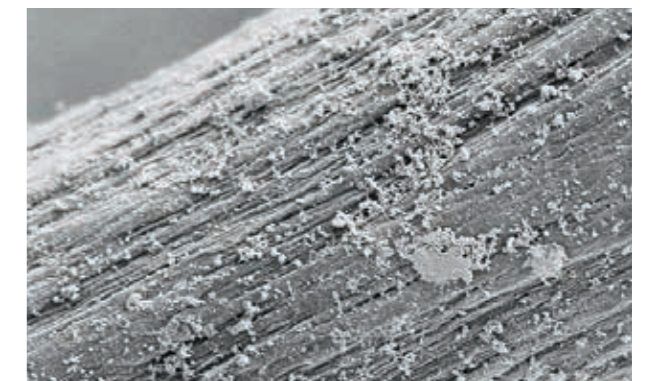
The high adsorption selectivity of AQUALEN-As made it possible to use such a material to eliminate even trace quantities of very harmful contaminants which cannot be caught by other purification methods (i.e., ROVs arsenic (III)).



AQUALEN-As fibers

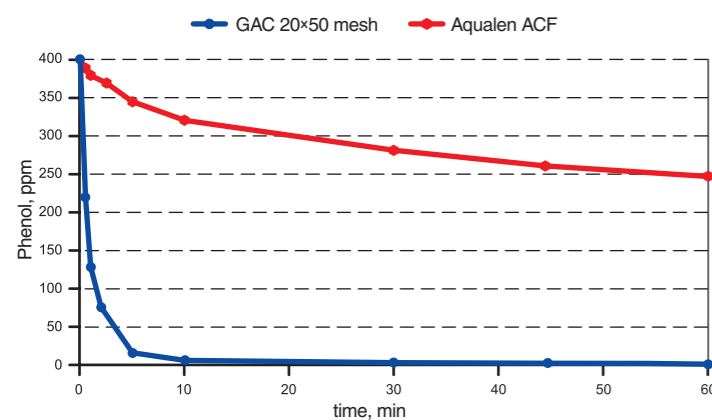
General properties of AQUALEN-As:

Material structure:	Modified PAN
Functional Groups:	Anion-exchange, FeOOH
Physical Form:	Fibers
Dimensions (mm):	0.02 (diameter)
Pore volume (cm³/g):	0.5
Capacity:	
Arsenic (III):	32 mg/g
Arsenic (V):	36 mg/g
Chromium (VI):	5 mmol/g
Perchlorate ClO ₄ ⁻ :	50 mg/g
Lead:	1.7 mmol/g

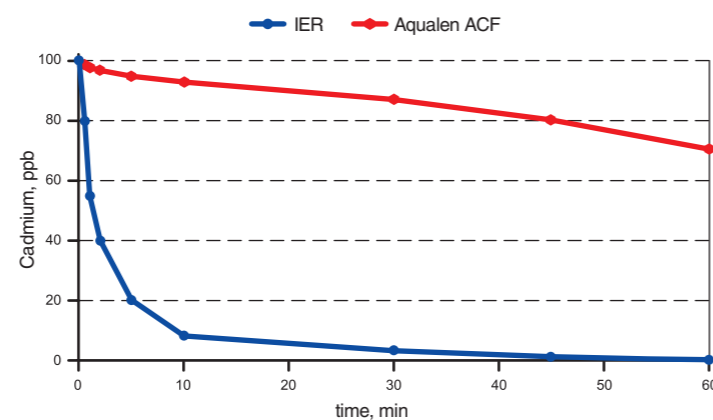


Ferrihydrite-coated surface of AQUALEN-As fiber

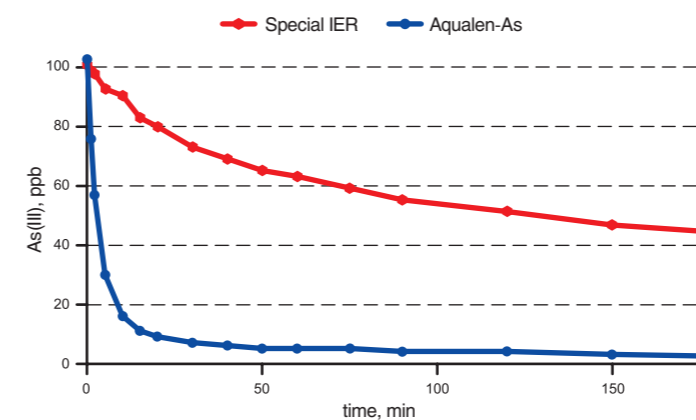
Phenol reduction



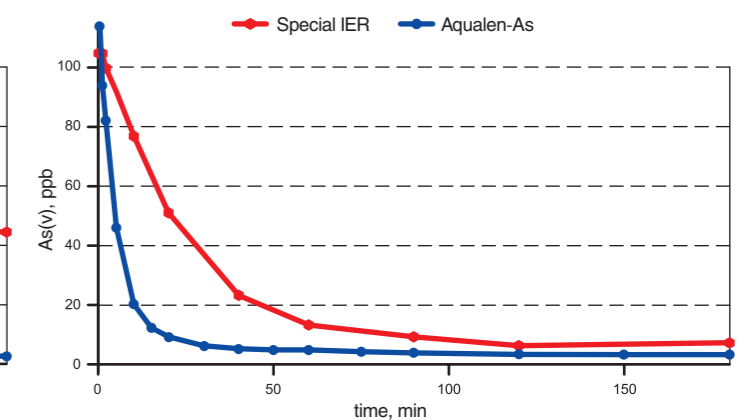
Cadmium reduction



Arsenic (III) reduction



Arsenic (V) reduction



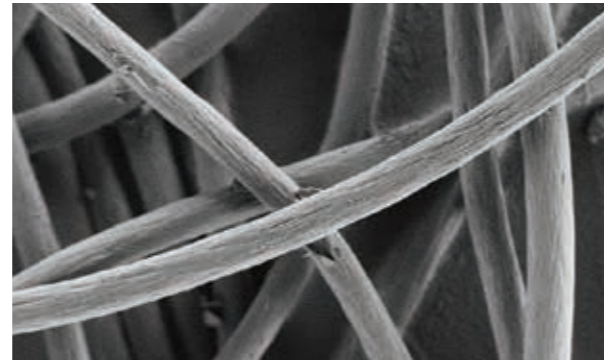
SORBENTS

AQUALEN-2™ chelating ion-exchange fiber

AQUALEN-2's chelating ion-exchange fiber comprises polyacrylonitrile polymer backbone with carboxylic cation-exchange and nitrogen containing anion-exchange groups on its surface. Functional groups form chelating centers with an excellent selective affinity toward heavy metal ions, especially for cadmium, lead, copper and mercury. The ability to offer both high flow rates and heavy metal ion removal is a result of the large outer surface area of the small fibers (less than 20 μm diameter). Consisting of thin fibers, AQUALEN-2 shows superior speed of cation exchange toward heavy metal ions as compared to state-of-the-art granular resins.

AQUALEN-2 is a highly selective, non-toxic, non-swelling material which exhibits very low flow resistance and can be easily regenerated. AQUALEN-2 is superior in the majority of applications as compared to state-of-the-art granular chelating resins

The surface of AQUALEN-2 can be easily coated with microcrystals of metallic silver to obtain anti-bacterial properties.

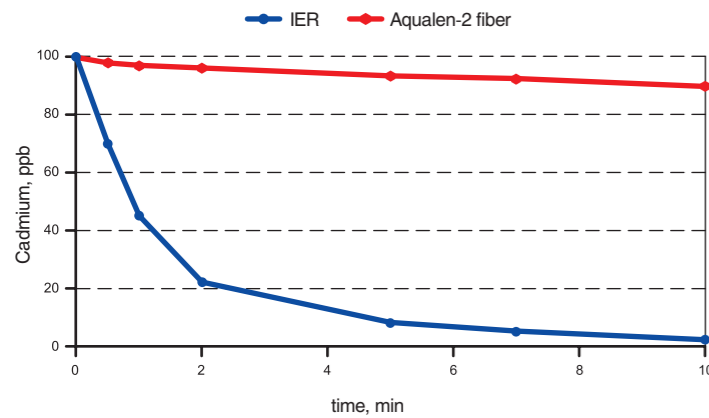


AQUALEN-2 fibers

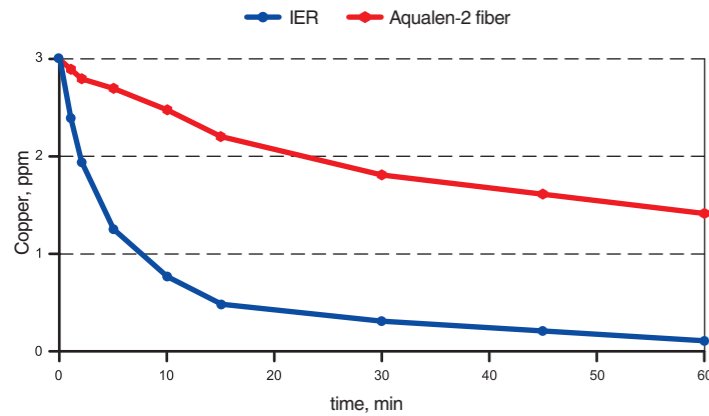


Silver-coated AQUALEN-2 antibacterial fibers

Cadmium reduction (Ca²⁺ background)



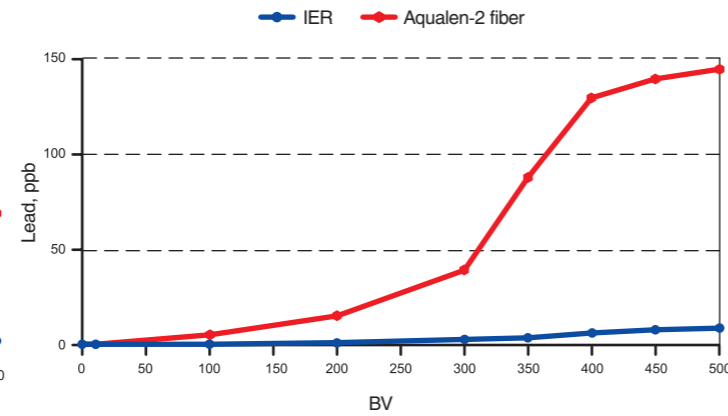
Copper reduction (Ca²⁺ background)



General properties of AQUALEN-2:

Material structure:	Modified PA
Functional Groups:	Carboxylic, Various nitrogen-containing groups
Physical Form:	Fibers
Dimensions (mm):	0.02 (diameter)
Selective Copper Capacity:	1.5
Exchange selectivity constant in 0.1 N Ca(NO₃)₂:	
Cu/Ca:	780
Pb/Ca:	580

Lead breakthrough



FILTER JUGS



Lightweight and compact Aquaphor filter jug is your first step towards living with genuinely clean and tasty water. Aquaphor filter jugs are always at hand and ready to purify your drinking water at home, in the office or the countryside. A wide choice of colors and shapes allows Aquaphor jugs to fit into any interior design and meet various water consumption needs. Smaller items have capacity of 2.5 litres and fit inside the fridge door while larger models hold up to 4.2 litres and are helpful for a family of several people. Cartridges purify 170 to 350 litres of water depending on the model and take a minute to replace.

STANDARD SERIES FILTER JUGS

The lightweight and convenient filter jugs of the Standard series are the embodiment of practical minimalism. Designed with the consumer's needs in mind, every filter jug has a removable lid and a scale for determining the water volume. Standard is a compact and convenient filter jug. It is a perfect product for a small kitchen or refrigerator.

COMPACT B15

Jug capacity: 2.4 L
 Funnel capacity: 0.9 L
 Special features: removable handle
 Replacement cartridge: B15
 Filter life: 170 L
 Color:

Shipping carton: 4 items

NEW

TIME

Jug capacity: 2,5 L
 Funnel capacity: 1,2 L
 Lid type: flip-top
 Replacement cartridge: B25
 Filter life: 200L
 Color:

Shipping carton: 7 items

COMING SOON

STANDARD

Jug capacity: 2.5 L
 Funnel capacity: 1.2 L
 Lid type: flip-top
 Replacement cartridge: B15
 Filter life: 170 L
 Color:

Shipping carton: 7 items

COMPACT B25

Jug capacity: 2.4 L
 Funnel capacity: 0.9 L
 Special features: removable handle
 Replacement cartridge: B25
 Filter life: 200 L
 Color:

Shipping carton: 4 items

NEW

REAL

Jug capacity: 2,9 L
 Funnel capacity: 0,8 L
 Lid type: flip-top
 Replacement cartridge: B15
 Filter life: 170 L
 Color:

Shipping carton: 4 items

COMING SOON

**SMILE A5
SMILE A5 (MG)**

Jug capacity: 2,9 L
 Funnel capacity: 1 L
 Lid type: flip-top
 Replacement cartridge: A5, A5 (Mg)
 Filter life: 170 L
 Color:

Shipping carton: 4 items

NEW

PREMIUM SERIES FILTER JUGS

The smooth design of the Premium series filter jugs goes along with their smart ergonomics. The solid lids are made of impact-resistant ABS plastic equipped with handy slider or flip-top for easy water intake. Mechanical counter attached to the filter jug reminds when it's time to replace the cartridge.

tritan™ from eastman
 Provence, Onyx and Round models are made of shockproof material

**PROVENCE A5
PROVENCE A5 (MG)
PROVENCE B5**

Jug capacity: 4.2 L
 Funnel capacity: 1.2 L
 Lid type: flip-top
 Counter type: mechanical
 Replacement cartridge: A5, A5 (Mg) / B5
 Filter life: 350 L / 300 L
 Color:

Shipping carton: 6 items

ROUND

Jug capacity: 4.2 L
 Funnel capacity: 1.2 L
 Lid type: flip-top
 Counter type: mechanical
 Replacement cartridge: B15
 Filter life: 170 L
 Color:

Shipping carton: 6 items

ONYX

Jug capacity: 4.2 L
 Funnel capacity: 1.2 L
 Lid type: flip-top
 Counter type: mechanical
 Replacement cartridge: B25
 Filter life: 200 L
 Color:

Shipping carton: 6 items

PRESTIGE

Jug capacity: 2.8 L
 Funnel capacity: 1.3 L
 Lid type: slider
 Counter type: mechanical
 Replacement cartridge: B5
 Filter life: 300 L
 Color:

Shipping carton: 5 items

AMETHYST

Jug capacity: 2.8 L
 Funnel capacity: 1.3 L
 Lid type: slider
 Counter type: mechanical
 Replacement cartridge: B25
 Filter life: 200 L
 Color:

Shipping carton: 9 items

JASPER

Jug capacity: 2.8 L
 Funnel capacity: 1.3 L
 Lid type: flip-top
 Counter type: mechanical, electronic
 Replacement cartridge: B25
 Filter life: 200 L
 Color:

Shipping carton: 6 items

IDEAL

Jug capacity: 2.8 L
 Funnel capacity: 1.3 L
 Lid type: slider
 Counter type: mechanical
 Replacement cartridge: B15
 Filter life: 170 L
 Color:

Shipping carton: 9 items

ARCTIC

Jug capacity: 2.8 L
 Funnel capacity: 1.3 L
 Lid type: flip-top
 Counter type: mechanical
 Replacement cartridge: A5
 Filter life: 350 L
 Color:

Shipping carton: 5 items



REPLACEMENT FILTER CARTRIDGES



Replacement cartridges are the heart of any filter. With the best varieties of activated carbon, Aquaphor filter cartridges reliably and irreversibly detain certain organic compounds, iron and heavy metals, and other types of harmful impurities, as well as eliminate excessive water hardness and prevent scaling. A wide range of cartridge modifications allows you to choose a water filter cartridge that best suits your needs.



NEW

A5

The Aquaphor A5 filter offers longer lasting protection from contaminants in tap water that is heavily polluted with rust, sand and silt. It contains more sorbent for an extended filter life of 350 litres. Used with Aquaphor filter jugs with B5 cartridge fit.

Filter life: 350 L
Barcode: 4744131011103
Shipping carton: 12 items, 40 items



B5

Replacement filter cartridge for Aquaphor filter jugs. Improves taste and odor of drinking water. Removes major impurities, residual chlorine, lead, organic compounds and other contaminants which occur in tap water. In order to prevent bacterial growth inside the cartridge within the period of use, we developed special Aqualen fibers containing silver. It is recommended for use with the water of medium hardness (2–4 meq/L).

Filter life: 300 L
Barcode: 4744131010090
Shipping carton: 12 items, 40 items
Multipacks:
 2 items: 4744131010076
 3 items: 4744131010168
 4 items: 4744131010311



NEW

A5 (MG)

Enriches the water with Magnesium up to 30% of your recommended daily value. The Aquaphor A5 Mg filter offers longer lasting protection from contaminants in tap water that is heavily polluted with rust, sand and silt. It contains more sorbent for an extended filter life of 350 litres. Used with Aquaphor filter jugs with B5 cartridge fit.

Filter life: 350 L
Barcode: 4744131011103
Shipping carton: 12 items, 40 items



B15

Universal replacement filter cartridge for filter jugs of leading German and other EU, USA, UK producers and for Aquaphor water filter jugs. Removes major impurities, residual chlorine, lead, organic compounds and other contaminants which occur in tap water. Improves taste and odor of drinking water. B100-15 contains patented mix of fine granules of activated carbon and Aqualen fibers.

Filter life: 170 L
Barcode: 4744131010137
Shipping carton: 24 items
Multipack:
 3 items: 4744131010151



A100

Launched in 2016, the cartridge features 99.99% protection from bacteria which is equally as effective as boiling the water. A100 employs antibacterial hollow fiber membrane by KITZ Group (Korea). Ensures purification of 150 litres of water. Used with Aquaphor filter jugs with B15 cartridge fit.

Filter life: 150 L
Barcode: 4600987009001
Shipping carton: 24 items



B25

Universal replacement filter cartridge for filter jugs of leading German and other EU countries, USA, and UK producers and for Aquaphor filter jugs. Improves taste and odor of drinking water. Removes major impurities, residual chlorine, lead, organic compounds and other contaminants which occur in tap water.

Filter life: 200 L
Barcode: 4744131010144
Shipping carton: 24 items
Multipack:
 3 items: 4744131010335



B25 (MG) MAXFOR

In addition to removing chlorine, phenol, pesticides, iron and odor, it actively enriches tap water with magnesium, a mineral which is recommended for everyday health care. The filter life equals 200 litres. Fits filter jugs of Aquaphor and any other brand utilizing the Brita Maxtra standard.

Filter life: 200 L
Barcode: 4744131011349
Shipping carton: 24 items, 12 items

FAUCET WATER FILTERS



Aquaphor faucet filters incorporate the advantages of water purification technologies with a stylish design, high efficiency and zero installation requirements. One can easily attach them to any kind of tap, so it is convenient to use in the office and country house. With the benefit of the same mobility as filter jugs, faucet filters provide much longer filter life and a higher filtration rate. In total, you get 750-4000 L of fresh and clean water.

Convenient, efficient yet affordable faucet filters are popular among people who live in a rented apartment or travel a lot.

There is a special model designed for camping lovers — super-compact and ultra-light Aquaphor VOYAGER filter, which can be easily attached not only to any type of tap, but also to a plastic bottle neck. With a filter life of 1000 L, it will substitute hundreds of plastic bottles along your track.

Advantages of faucet filters:

- can be attached to virtually any type of water tap
- take little space on the kitchen counter
- convenient and useful during trips



MODERN

The most popular faucet water filter, Modern has the greatest resource and performance. Through a combination of fibrous and granular adsorbents, Modern effectively removes harmful impurities from the water. The connection to the mixer can be temporary or permanent, which is achieved by using a nozzle with a switch. The filter can also be equipped with softening modules.

Color options:



Filter life:	4000 L
Filtration speed:	1-1.2 L
version 1	4600987000060
version 2 (with Diverter P21)	4600987000251
Shipping carton:	10 items



TOPAZ

This stylish attachment to the faucet has a mode switch (purify/non-purify). Through a combination of fibrous and granular adsorbents baked into carbon block with the use of DFS technology, it effectively removes harmful impurities from the water.

Filter life:	750 L
Replacement cartridge:	AQUAPHOR Topaz
Barcode:	4600987001104
Shipping carton:	32 items



VOYAGER UNIVERSAL

This is an ideal filter for people traveling outside their homes or even abroad. Using the adapter included with the filter, Aquaphor Voyager can be attached to any regular plastic bottle or faucet.

Filter life:	1000 L
Replacement cartridge:	B300
Barcode:	4600987000077
Shipping carton:	32 items



B200, B200 (SOFTENING)

A set of replacement filters for drinking water purification and softening used by AQUAPHOR Modern, it utilizes a unique combination of fibrous and granular adsorbents to effectively remove virtually all harmful impurities from the water.

B200 barcode:	4600987000053
Shipping carton:	24 items
B200 (softening) barcode:	4600987002149
Shipping carton:	24 items

STATIONARY ABSORPTION FILTERS

WATER PURIFYING PROCESS

Whole-house water filtration is a solution for those who appreciate the holistic approach to organizing personal access to high-quality water. Tap water travels many kilometers along piping systems of an unknown condition before we use it at home. Whole-house water filtration turns it into the source of clean, fresh and lively water, opening a new perception of your hygiene as a daily spa rite. Whole-house filtration systems provide water for all the kitchen needs as well, the taste of food and drinks is full of flavors, glass ware has no white stains, household linen and clothing get softer and serve longer. Most important — your children are safe from water impurities as Aquaphor whole-house filtration systems effectively prevent any effects of municipal water treatment system failures.

Pure water at home is the best way to take care of the closest and dearest people! Whole-house water filtration usually consists of several stages, Aquaphor has solutions for each.

1 Pre-filtration

Aquaphor pre-filters meet water at the entrance and ensure the mechanical purification of water from solid particles such as sand, rust or silt. This stage helps to prolong life of washing equipment and the bathroom fixtures.

2 Purification of shower water

In-line Aquaphor Viking systems follow the pre-filter stage as in addition to removing sediment from both cold and hot water, they reduce chlorine, organic compounds, heavy metals and any kind of

odor. Ordinary shower turns into a refreshing mountain waterfall and taking the bath feels like diving into your personal water spring, where you will want to stay and set aside the challenges of everyday life.

3 Water for drinking and cooking

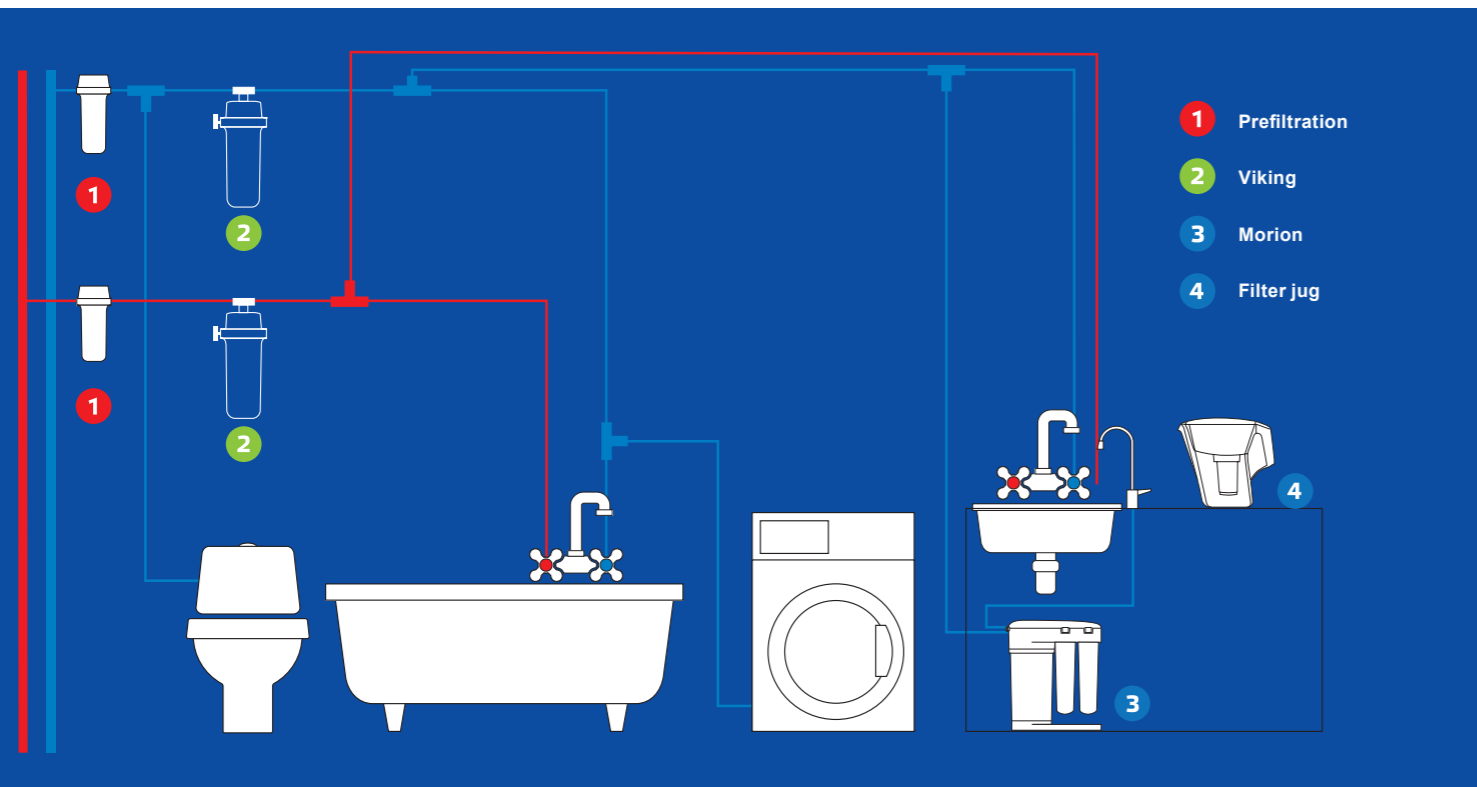
Aquaphor filter jugs, under counter systems or reverse osmosis systems provide the final step in water purification for homes and offer perfectly clean, safe and tasty water to drink it fresh and cook delicious food.

AQUAPHOR STATIONARY ABSORPTION WATER FILTERS ARE THE PERFECT CHOICE FOR A MODERN KITCHEN

Filters of this type are conveniently located under the sink. Crystal clear water flows from a separate faucet located next to the usual faucet.

Ranging from 4000 to 12,000 liters, the lifetime of the stationary filters is truly exceptional. The quality of the multi-stage water treatment process will make you forget about the existence of bottled water. In addition, the replacement modules, made with the use of CarbFiber Block technology, will allow you to potentially maintain water usage in your home during any emergency. After all, they can easily tolerate any situation, even if the concentration of harmful substances in tap water is 100 times higher than the norm!

Aquaphor stationary absorption systems consist of three product lines, every one of which has its own advantages.



AQUAPHOR FAVORITE

Aquaphor Favorite is a classic filter with a high flow rate (150 liters per hour) and a long replacement module lifetime (12,000 liters). It has been successfully used not only in apartments and houses, but also in coffee shops, hospitals and kindergartens. Aquaphor Favorite is the filter of choice for many smart consumers who like to spend a lot of time in their kitchens.

Advantages of Aquaphor Favorite filter:

- sturdy stainless-steel housing
- easy installation and maintenance in hard-to-reach places
- the longest life cycle among similar water treatment systems
- preserves the natural water mineralization



Filter life Favorite: 12 000 L
Filtration speed: 2.5 L/min
Barcode: 4600987007724
Shipping carton: 4 items

Filter life Favorite: 12,000 L
Filtration speed: 2.5 L/min
Barcode: 4600987000770
Shipping carton: 4 items



B150

AQ Replacement filter for the Aquaphor Favourite under counter system.

DFS Due to its unique coaxial design and gradient porosity, tap water is purified from a majority of contaminants. B150 exhibits outstandingly long filtration life. The ion-exchange fibrous sorbent Aqualen™ with its modified selective chelating groups, profoundly and irreversibly purifies water from heavy metals.

CFB Contains silver in its active ionic form.

Barcode: 4744131011318
Shipping carton: 8 items

TRIO NORM / TRIO NORM H



The affordable filters from the Trio series are extremely popular with the financially conservative consumer and provide the highest quality at the lowest price. Practical, efficient and compact, Trio filters are designed to become a staple in every kitchen.

Advantages of Trio series filters:

- low-cost and high-quality drinking water
- simple and reliable design
- standard module's size of 2.5 by 10 inches
- purified water has hypoallergenic and antioxidant properties

Check EU package options from your local dealer.



REGULAR PACK



TRIO NORM

Filter life: 6000 L
Filtration speed: 2 L/min
Set includes: PP5, B510-02, B510-07
Barcode: 4600987002880
Shipping carton: 4 items



TRIO NORM H

Filter life: 4000 L
Filtration speed: 1.5 L/min
Set includes: PP5, B510-04, B510-02
Barcode: 4600987005621
Shipping carton: 4 items

Check EU package options from your local dealer.



TRIO REPLACEMENT FILTERS

Aquaphor produces a wide range of filter cartridges which fit the slim 10" standard. They can be used for Aquaphor Trio under counter systems and systems of other brands that use the same standard.



B510-02



CFB Designed with CarbFiber Block technology, this replacement filter uses finely divided activated coconut shell carbon. Its dense structure allows it to effectively remove organic impurities and active chlorine from the water. It filters particles down to 3 microns in size.

AQ Containing modified selective chelating groups, the ion-exchange Aqualen fibers deeply and irreversibly purify the water from heavy metals.

DFS The replacement filter contains silver in its active ionic form.

Barcode: 4744131011066

Shipping carton: 16 items

B510-03



CFB Designed with CarbFiber Block technology, this replacement filter pre-treats the water, removing organic impurities, heavy metals and chlorine. It filters particles down to 5 microns in size.

AQ The increased amount of selective ion-exchange Aqualen fibers contributes to the filter's high sediment-holding capacity and allows it to effectively remove colloidal and dissolved iron.

DFS The replacement filter contains silver in its active ionic form.

Barcode: 4744131011073

Shipping carton: 16 items

B510-04



A replacement filter for water softening, it is used in Aquaphor systems with a separate faucet. It softens the water, solving the problem of scaling and flaking in boiled water. It can be regenerated at home.

Barcode: 4600987000183

Shipping carton: 16 items

B510-07



CFB This replacement filter uses an ultra-dense fibrous carbon block made from powdered activated coconut shell carbon. It removes the residual concentrations of organic contaminants and heavy metals. It filters particles down to 0.8 microns in size.

AQ Modified Aqualen fibers distribute the water flow in the ultra-dense filter medium allowing for the best purification.

DFS The replacement filter contains silver in its active ionic form.

Barcode: 4744131011080

Shipping carton: 16 items

PP



The replacement polypropylene filter for mechanical pre-treatment of drinking water is used in Aquaphor systems with a separate faucet. The filter removes all particulate matter, including sand and rust. It is suitable for all drinking water systems that use a 10-inch standard housing.

Barcode: 4600987001975

Shipping carton: 16 items

[Check EU package options from your local dealer.](#)

CRYSTAL



CRYSTAL SOLO

Filter life: 4000 L
Filtration speed: 1,5 L/min
Barcode: 4600987002828

The smallest filter with a separate faucet that provides high-quality water purification at an affordable price. The filter module has a stylish covering made from durable plastic (homopolymer of polypropylene). It is recyclable and has an environment-friendly production process. It takes up minimal space and safely cleans water of any chlorine, organic compounds and other impurities. Recommended pre-treatment of water to remove sediment impurities.



Stylish, compact and ultra-modern, the filters of the Crystal series are both efficient and fast at water purification. The innovative solutions used to design these filters make them the most convenient and ergonomic among the stationary absorption systems. Crystal filters are as reliable and stable as the change of seasons. Replacing the modules after many months of continuous use is so easy and safe that even a child could do it.

Advantages of Aquaphor Crystal filter:

- slim and stylish ergonomic design
- a simple module replacement process only takes a few seconds
- when replacing the modules, the consumer does not come into contact with absorbed impurities
- purified water has hypoallergenic and antioxidant properties



CRYSTAL A

Filter life: 6000 L
Filtration speed: 2 L/min
Set includes: K5, K2, K7
Barcode: 4600987005966
Shipping carton: 4 items



CRYSTAL

Filter life: 8000 L
Filtration speed: 2.5 L/min
Set includes: K3, K2, K7
Barcode: 4600987001951
Shipping carton: 3 items



CRYSTAL SOFTENING

Filter life: 6000 L
Filtration speed: 2 L/min
Set includes: K3, KH, K7
Barcode: 4600987002187
Shipping carton: 4 items

CRYSTAL ECO



Aquaphor Crystal ECO filtration systems provide reliable ultrafiltration of drinking water.

Crystal ECO makes tap water safe to drink by reducing harmful substances, including bacteria and cysts.

It employs hollow fiber membrane ultrafiltration to remove the particles down to 0.1 microns in size. Compact and easy-to-use Crystal ECO drinking water filtration system fits any family or household. It is also good for allergy sufferers, children and elderly people and people with sensitive digestive and immune systems. Its design and performance make Aquaphor ECO the most convenient and ergonomic choice among stationary absorption systems.

Advantages of Aquaphor Crystal ECO filter:

- provides 99.99% protection from bacteria and cysts
- long filter life of 8000 L
- slim and stylish ergonomic design
- simple cartridge replacement process only takes a few seconds (click and turn)
- when replacing the cartridges, the consumer does not come into contact with absorbed impurities
- environmentally friendly
- purified water has hypoallergenic properties



CRYSTAL ECO

Filter life: 8000 L
Filtration speed: 2.5 L/min
Set includes: K3, K7B, K7
Barcode: 4600987005485
Shipping carton: 3 items



CRYSTAL ECO H

Filter life: 8000 L
Filtration speed: 2.5 L/min
Set includes: K3, KH, K7B, K7
Barcode: 4600987005492
Shipping carton: 3 items

Check EU package options from your local dealer.

CRYSTAL REPLACEMENT FILTERS



K2 SORPTION TREATMENT AND PURIFICATION

CFB Designed with CarbFiber Block technology, the replacement filter uses finely divided activated coconut shell carbon. Its dense structure allows it to effectively remove organic impurities and active chlorine from the water. It filters particles down to 3 micron in size.

AQ Containing modified selective chelating groups, the ion-exchange Aqualen fibers deeply and irreversibly purify the water from heavy metals.

DFS The replacement filter contains silver in its active ionic form.

Barcode: 4744131010878
Shipping carton: 16 items



K3 CARBON-BLOCK PRE-FILTER

CFB Designed with CarbFiber Block technology, the replacement filter pre-treats the water by removing organic impurities, heavy metals and chlorine. It filters particles down to 5 micron in size.

AQ The increased amount of selective ion-exchange Aqualen fibers contributes to the filter's high sediment-holding capacity and allows it to effectively remove colloidal and dissolved iron.

DFS The replacement filter contains silver in its active ionic form.

Barcode: 4744131010861
Shipping carton: 16 items



K5 MECHANICAL PRE-FILTER

Sediment filter cartridge pre-filtration. Replacement sediment filter manufactured from 100% Polypropylene. It is used to retain dirt and other sediment particles 5 micron or larger in the incoming water.

Barcode: 4744131010946
Shipping carton: 16 items



KH SOFTENING

A replacement filter for water softening, it is used in AQUAPHOR systems with a separate faucet. It softens the water, which solves the problem of scaling and flakes in boiled water. It can be regenerated at home.

Barcode: 4744131010885
Shipping carton: 16 items



K7M WATER CONDITIONING AND MINERALISATION

Aquaphor K7M is used as the final step in Aquaphor reverse osmosis purifiers. It provides water conditioning and remineralization for better taste and recommended electrolyte balance of the drinking water.

Barcode: 4744131010939
Shipping carton: 16 items



K7 FINISHING WATER PURIFICATION AND CONDITIONING

CFB This replacement filter uses an ultra-dense CarbFiber Block made from powdered activated coconut shell carbon. It removes the residual concentrations of organic contaminants and heavy metals. It filters particles down to 0.8 micron in size.

AQ Modified Aqualen fibers distribute the water flow in the ultra-dense filter medium which provides optimal purification.

DFS The replacement filter contains silver in its active ionic form.

Barcode: 4744131010915
Shipping carton: 16 items



K7B MICROFILTRATION

HF A hollow fiber membrane installed at the entrance of the module removes particles as small as 0.1 micron and provides 99.99% protection from bacteria.

CFB This replacement filter uses an ultra-dense CarbFiber Block made from powdered activated coconut shell carbon. It removes the residual concentrations of organic contaminants and heavy metals. It filters particles down to 0.8 micron in size.

AQ Modified Aqualen fibers distribute the water flow in the ultra-dense filter medium, resulting in the best purification.

DFS The replacement filter contains silver in its active ionic form.

Barcode: 4744131012001
Shipping carton: 16 items

REVERSE OSMOSIS

Aquaphor presents a new generation of reverse osmosis water filters. A new type of storage container, water-on-water tank, makes them stand out among other automated water treatment systems.



REVERSE OSMOSIS

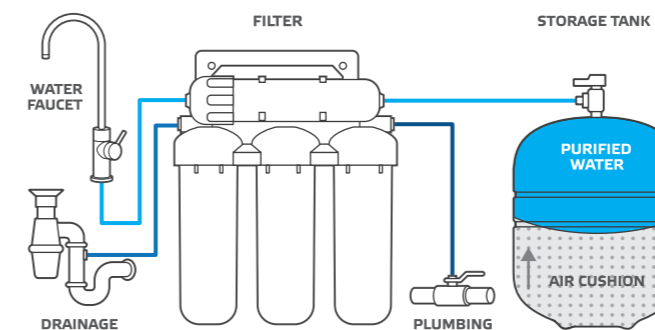
Aquaphor stationary reverse osmosis systems employ the most advanced technologies of household water treatment.

Reverse osmosis is a purification process in which water passes through a semipermeable membrane. Because of its extremely small pore size and special physical-chemical properties, the membrane allows only water molecules to pass through.

Not too long ago, reverse osmosis systems were only used in industrial applications and the production of bottled water. Modern technology has significantly decreased the cost and size of the membranes. Every consumer can now afford to own a water-purifying appliance running smoothly right in the kitchen!

Similarly to the stationary absorption systems, Aquaphor reverse osmosis systems are conveniently hidden under the sink. The water is of exceptional purity and crystal clarity. It is dispensed from a separate faucet.

REVERSE OSMOSIS SYSTEMS WITH AIR-ON-WATER STORAGE TANK

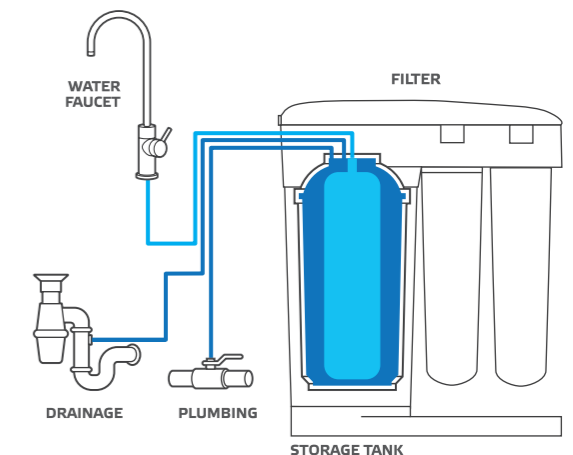


The air-over-water storage tank has two compartments, one for purified water and one for air. When the tank is filled with clean water, the air gets compressed. When the tap is opened, the air forces the water out. When the pressure on the air is increased, the system becomes less efficient. This leads to significant drop in filtration speed and significant increase in the amount of water discharged into the drain.

The traditional household membrane filters have a number of disadvantages:

- clean water storage tank, which exceeds the size of the actual filter, must be used
- pressure in the pipes must not exceed 3.5 atmospheres
- a large amount of water is discharged into the drain
- an overwhelming amount of control valves and tubes makes the filter very cumbersome

REVERSE OSMOSIS SYSTEMS WITH WATER-ON-WATER STORAGE TANK



Clean water occupies the entire volume of the water-on-water tank, which contributes to its smaller size. There is no back pressure, hence the filtration speed stays high and a minimal amount of water gets discharged into the drain.

The reverse osmosis system with the water-on-water tank has the following benefits:

- + it takes up three times less space in the kitchen
- + it cuts the water intake time and water waste in half
- + a reduced amount of pressure on the pre-filter results in longer life cycle of the system's membrane and its replacement modules
- + maintenance costs are cut in half



AQUAPHOR OSMO CLASSIC



A reverse osmosis system with a time-proven, traditional configuration. Removes all types of water contaminants including hardness, bacteria, viruses, nitrates, nitrites, traces of pharmaceuticals and any particles down to 0.0005 micron in size.

Equipped with a 10 litre storage tank and a separate faucet for clean water. Requires tap pressure of at least 3 bar.

Advantages of Aquaphor Osmo Classic:

- effective pre-filtration
- durable housing, designed as a single unit
- classic 10" filter cartridges
- space saving under sink placement options: housing can be hung on the wall



OSMO CLASSIC

Set includes: PP20, B510-03, ULP-50, PP5
Barcode system: 4600987001890

Check EU package options from your local dealer.

AQUAPHOR OSMO CRYSTAL



Osmo Crystal is a frequent choice for households that are looking for classic reverse osmosis system. Reliability, ease of maintenance and reduced footprint justify the long lasting popularity of this system.

Advantages of Aquaphor Osmo Crystal:

- elegant and ergonomic design
- cartridge swap takes a minute and can be performed by a non-professional
- increased filter life

Size: 371x420x190mm

Aquaphor-Osmo-100-K-M

Filtration speed: 380 L/day (100 Gal/day)

Replacement filter: K5, K2, KO100, K7M

Barcode: 4600987002446

Aquaphor-Osmo-50-K-M

Filtration speed: 190 L/day (50 Gal/day)

Replacement filter: K5, K2, KO50, K7M

Barcode: 4600987002422



Check EU package options from your local dealer.



AQUAPHOR OSMO CLASSIC REPLACEMENT KIT: PRE-FILTRATION AND MEMBRANE CARTRIGES

Set includes: PP20, B510-03, ULP-50, PP5

Barcode set: 4600987009131

Shipping carton: 4 items

Set includes: PP20, B510-03, PP5

Barcode set: 4600987009124

Shipping carton: 4 items

Check EU package options from your local dealer.



WATER BOOSTER PUMP KIT

The kit is designed to increase water pressure in the system and to boost the filtration speed when municipal water system pressure is low. Used with the recent models of Aquaphor reverse osmosis systems with both water-on-water or air-on-water tanks.

Water booster pump kit models:

Model 1 is used with Aquaphor reverse osmosis systems including RO 70, RO-101(s), Osmo Crystal and Osmo Classic, as well as similar systems of other brands.

Model 2 is used with Aquaphor RO 31/41, the system with a jug-like storage tank that is placed on the kitchen countertop.

Barcode model 1: 4600987008752

Barcode model 2: 4600987008969

Shipping carton: 9 items

Check EU package options from your local dealer.



AQUAPHOR REVERSE OSMOSIS (RO) SYSTEMS

AQUAPHOR REVERSE OSMOSIS SYSTEMS represent a whole new category of home appliances; extra-compact yet powerful enough to provide lasting access to ultimately clean water, regardless of the quality of the input water.

In Aquaphor RO systems, water undergoes the same treatment stages as at the drinking water plant.

Step 1: Pre-filtration. The preliminary water purification and preparation before it heads to the membrane separation phase.

Step 2: Permeable membrane. The membrane is permeable to nothing but clean water with the whole process being facilitated by water pressure. As a result, water is divided into two parts: absolutely clean that is ready for the next stage and the rejected water, that contains all the contaminants and is drained into the sewage.

Step 3: Conditioning and mineral balancing using DWAY technology.

Aquaphor RO systems finish water preparation by returning the beneficial minerals back into water within a recommended dosage. Instead of dirty, hard or even infected water you get it absolutely clean, safe and tasty while also saving money and time.

Aquaphor RO systems — the cutting-edge technologies on your kitchen!

DWAY

Double Way

patent №2262557,2282494 (Russian Federation)

Unique technology is applied in the Aquaphor K7M cartridge.

Clean water which passed all the filtration stages flows through a cartridge with sub-crystalline mineralizer. It enriches water with a mix of Calcium and Magnesium minerals to improve its positive impact on our health and physiological processes.

WWT

Water-on-water storage Tank

The reservoir tank for filtered water in Aquaphor RO systems makes them up to two times more water efficient than classic RO systems. Annual water savings can amount up to 9,000 L. Aquaphor RO reduces maintenance costs by up to 50% and effectively functions at low incoming water pressure.

AQUAPHOR RO-31

AQ

DFS

CFB

ICM

Click Turn

HSS

AHE

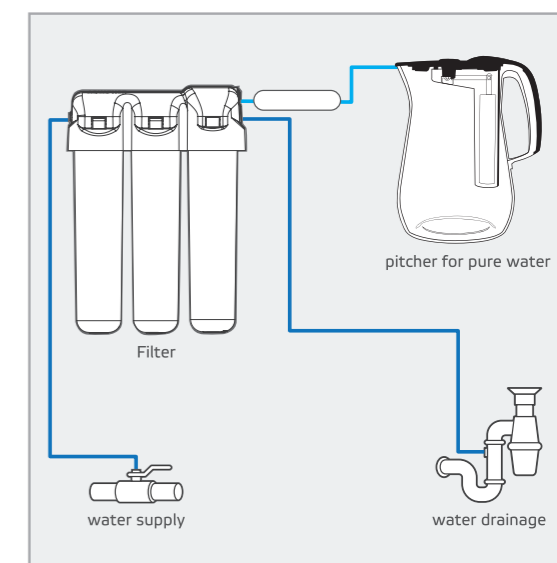
STC

WWT

RO-31 reverse osmosis system offers a unique way of making pure and soft drinking water. Replacing traditional pressurized storage tank for clean water with water jug ensures high quality purification, freshness and ease of use. Clean water is produced in front of your eyes.

Advantages of RO-31:

- occupies little space above and under the sink
- extremely thorough water purification
- optimized mineral balance
- operates at low pressure
- can use 2nd jug for your convenience, e.g. to store cooled water in refrigerator



Set includes:

K5, K2, KO-100S, mineralizer

Barcode:

4600987007564



AQUAPHOR RO-70



Aimed at drinking water purification. Addresses mechanical and colloidal particles and organic impurities while also mineralizing the clean water. Removes unwanted taste, smell and colors in tap water or water from the local water sources like wells.

Advantages of RO 70:

- small footprint
- absolutely pure water, free from scale
- cartridge swap takes a minute and can be performed by a non-professional
- works with low water main pressure
- cuts off bacteria, cysts and viruses

Size: 271x190x495 mm
Filtration speed: 190 L/day
Set includes: K3, KO-50, Water conditioner
Barcode: 4600987008196

[Check EU package options from your local dealer.](#)



AQUAPHOR RO-101S MORION



RO-101s is a versatile reverse osmosis system that provides pure drinking water with a balanced mineral composition. The innovative water-on-water storage tank, high dirt-retention capacity and low flow resistance pre-filters, combined with advanced hydraulics, all contribute to performance and reliability.

Advantages of RO-101S Morion:

- built-in 5 L water-on-water storage tank
- low operating pressure requirements
- extremely thorough water purification
- complete water softening
- water mineralization with Mg and Ca
- 99.99% reduction of bacteria, cysts and viruses
- improved water efficiency
- lower cost of ownership, cuts waste water and cost in half



MORION RO-101S

Size: 371 x 420 x 190 mm
Filtration speed: 190 L/day
Set includes: K5, K2, KO-50S, K7M
Barcode: 4744131011950

AQUAPHOR RO-201

4th generation reverse osmosis system designed to achieve high permeate recovery. Novel membrane osmo-scrubbing system regularly cleans the membrane both during the filtration cycles and in the intervals between filtrations.

Advantages of RO-201:

- built-in 5 L water-on-water storage tank
- 100 GPD filtration rate
- permeate recovery up to 60%
- highly efficient, built-in electric pump
- LED indicator of remaining filter
- minimal operating tap pressure 0.8 bar
- water mineralization with Mg and Ca
- composite CarbFiber block and 0.1µm hollow fiber membrane post-filter

Size: 271x190x455 mm
Barcode system: 380 L/day
Set includes: K5, K2, KO-100S, K7M
Barcode system: 4744131011271

[Check EU package options from your local dealer.](#)



REPLACEMENT FILTERS SET

Set includes: K5, K2, KO-50S, K7M
Filtration speed: 190 L/day
Barcode set: 4600987009117
Shipping carton: 4 items

[Check EU package options from your local dealer.](#)



REPLACEMENT FILTERS SET

Set includes: K5, K2, KO-50S, K7B
Filtration speed: 190 L/day
Barcode set: 4600987009117
Shipping carton: 4 items

[Check EU package options from your local dealer.](#)

IN-LINE VIKING FILTERS

In-line Viking filters are installed on hot and cold water pipes, providing clean water to the entire home.

When using Viking filters, such ordinary tasks as showering or giving your children a bath turn into a genuinely pleasant experience. After all, Viking filters reliably purify hot and cold water to remove insoluble impurities, heavy metals, chlorine and other contaminants. An exceptionally long replacement module lifetime (from 30,000 L to 100,000 L of highly purified water) allows you to consume water without overspending, so you can enjoy life in a world of pure water and not have to worry about tomorrow. With Viking, you have achieved that right!

Similar to other AQUAPHOR products, Viking filters stand out for their elegance of design. Their compact size ensures there is room for them even in the smallest homes. Their module replacement process is extremely simple and requires no tools.

VIKING



Aquaphor Viking is the only filter that can purify all the water in your home not only from rust and sand, but also from chlorine, organic chemicals and heavy metals.

Advantages of Aquaphor Viking filters:

- sturdy stainless-steel housing
- simple installation and maintenance even in hard-to-reach places
- the option to use cartridges for cold, hot and drinking water
- removes sand, rust, chlorine and other contaminants from the water
- causes a negligible drop in water pressure

Barcode Viking housing:

4600987001470

Shipping carton:

1 items

Barcode Viking MIDI housing:

4600987002927

Shipping carton:

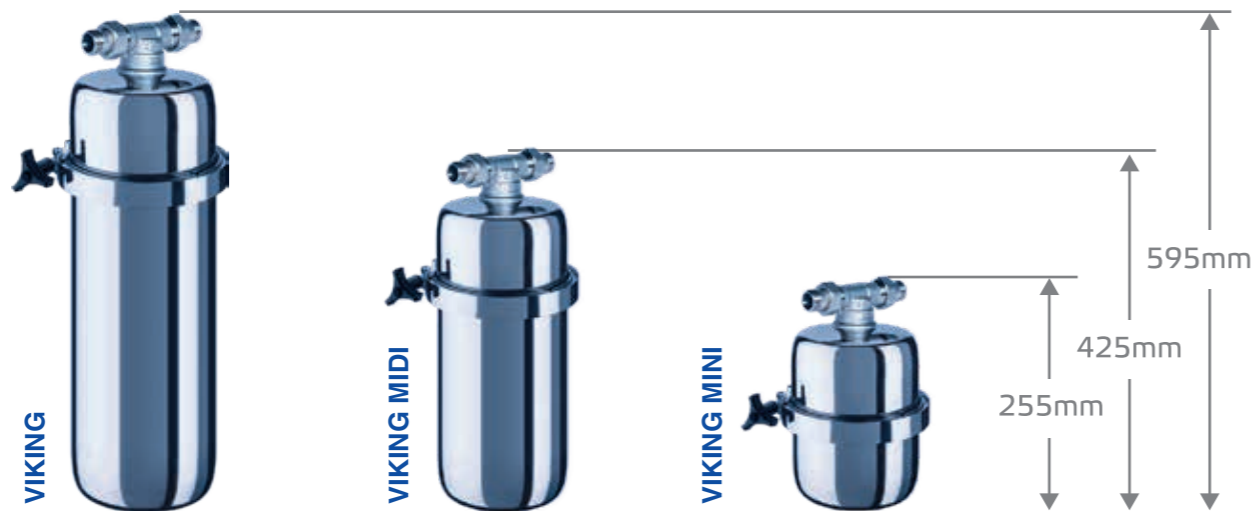
4 items

Barcode Viking MINI housing:

4600987002910

Shipping carton:

4 items



VIKING REPLACEMENT FILTERS



B520-13

A replacement filter for cold water purification in the entire home. Thanks to the unique coaxial structure and gradient porosity of the module, the water is purified from sediment, chlorine, heavy metals and other impurities while negligibly reducing the water pressure.



Designed with CarbFiber Block technology, it filters particles down to 5 micron in size.



The increased amount of selective ion-exchange Aqualen fibers contributes to the filter's high sediment-holding capacity and allows it to effectively remove colloidal and dissolved iron.



The replacement filter contains silver in its active ionic form.

B520-13 Viking

Filter life: 100,000 L

Filtration speed: 25 L/min

Barcode: 4600987001456

B515-13 Viking MIDI

Filter life: 60,000 L

Filtration speed: 15 L/min

Barcode: 4600987002958

Shipping carton: 4 items

B505-13 Viking MINI

Filter life: 30,000 L

Filtration speed: 10 L/min

Barcode: 4600987002934

Shipping carton: 8 items



PP

A replacement polypropylene filter for mechanical pre-treatment of drinking water, it removes all sediment, including sand and rust. It is suitable for all drinking water systems that use 10-inch standard housing.

B515-PX5

Barcode: 4600987003993

Shipping carton: 4 items

B515-PG5

Barcode: 4600987005454

Shipping carton: 4 items

B520-PG20

Barcode: 4600987005416

B520-PG5

Barcode: 4600987003641

B520-PX20

Barcode: 4600987003610

B520-PX5

Barcode: 4600987003511

[Check EU package options from your local dealer.](#)



B150 PLUS

A replacement filter for drinking water purification. Thanks to the unique coaxial structure and gradient porosity of the module, virtually all harmful impurities are removed from the water. It has a particularly long lifetime.



Designed with CarbFiber Block technology, the replacement filter uses finely divided activated coconut shell carbon. Its dense structure allows it to effectively remove organic impurities and active chlorine from the water. It filters particles down to 0.8 micron in size.



Containing modified selective chelating groups, the ion-exchange Aqualen fibers deeply and irreversibly purify the water from heavy metals.



The replacement filter contains silver in its active ionic form.

B150 PLUS

Filter life: 40,000 L

Filtration speed: 10 L/min

Barcode: 4600987001401

B150 MIDI

Filter life: 25,000 L

Filtration speed: 7 L/min

Barcode: 4600987002972

Shipping carton: 4 items



B520-14

A replacement filter for hot water purification in the entire home, it negligibly reduces the water pressure.



Designed with CarbFiber Block technology, it filters particles down to 5 micron in size.



The increased amount of selective ion-exchange Aqualen fibers contributes to the filter's high sediment-holding capacity and allows it to effectively remove colloidal and dissolved iron.



The replacement filter contains silver in its active ionic form.

B520-14 Viking

Filter life: 50,000 L

Filtration speed: 25 L/min

Barcode: 4600987001753

B515-14 Viking MIDI

Filter life: 30,000 L

Filtration speed: 55 L/min

Barcode: 4600987002965

Shipping carton: 4 items

B505-14 Viking MINI

Filter life: 15,000 L

Filtration speed: 10 L/min

Barcode: 4600987002941

Shipping carton: 8 items

PRE-FILTRES



Aquaphor pre-filters are the cornerstone of all water purification. Before Aquaphor filters can protect you, you must protect them.

Pre-filters remove large insoluble impurities from tap water, including sand, rust and silt. They extend the life cycle of Aquaphor filters as well as of your appliances, plumbing, and pipes for cold and hot water by protecting them from dirt and mechanical damage.

Made from high-quality Noryl plastic, Aquaphor pre-filters can work in a wide range of temperatures and withstand enormous pressure. Despite all this power, they are very compact in size.

GROSS

Gross is a pre-filter housing for cold water. Effectively removing sand, rust, silt and other impurities, Gross simplifies the work of the drinking water filter, protects appliances from damage, and makes showering and bathing more enjoyable. Made of glass-fiber reinforced plastic, Gross has high pressure resistance and a convenient swivel bracket. It can be equipped with BigBlue 20" (508 mm) replacement module. Filter module replacement process is greatly simplified by the quick release mount.

Advantages of pre-filters:

- heavy-duty superplastic housing
- resistance to high temperatures
- excellent resistance to water hammers
- the quick-release "American" mount does not require tools for module replacement
- set of 3/4-inch metal fittings for easy connection
- the convenient bracket allows changing the direction of water entry and exit with a single motion

[Check EU package options from your local dealer.](#)



Aquaphor Gross Housing (20") (set)

Bar code: 4744131013848
Shipping carton: 6 items

Aquaphor Gross Pre-filter (20") (with an internal cartridge)

Bar code: 4744131011721
Shipping carton: 6 items

Aquaphor Gross Midi Housing (10") (set)

Bar code: 4744131013831
Shipping carton: 6 items

Aquaphor Gross Pre-filter (10") (with an internal cartridge)

Bar code: 4744131011738
Shipping carton: 6 items



REINFORCED PRE-FILTER HOUSING for cold water



The housing is reinforced with brass fittings to withstand hydraulic shocks in water main. Pre-filter removes rust, sand and other mechanical sediment, which is useful to ensure longer life of drinking water filters, improve shower and bath experience and protect home appliances.

1/2" brass fittings prevents excessive strain in the case-fitting connection unlike pre-filters with plastic threaded sockets. It makes the whole construction much more durable.

For a high quality of water purification we recommend using Aquaphor pre-filter cartridges that fit the 10" Slim Line standard.

Pre-filter housing Aquaphor for cold water:

Barcode: 4600987007656
Shipping carton: 6 items

Pre-filter housing Aquaphor for cold water (clear):

Barcode: 4600987007663
Shipping carton: 6 items

[Check EU package options from your local dealer.](#)



Advantages of the pre-filter housing:

- withstands pressure of 30 bars
- five-fold margin of durability
- hydroshock protection
- 250,000 cycle trials
- reinforced with silicate glass fibers
- end seal and brass threaded fittings for greater safety
- easy cartridge swap

PRE-FILTER CARTRIGES



B520-12

Gross 20 replacement filter for cold water purification in the entire home. Its unique structure and design allow the module to remove sediments, chlorine, heavy metals and other impurities from the water.



Replacement filter for the Gross 20" in-line system which provides whole-house cold water purification. Due to its advanced technological solutions (CarbFiber block) and design this cartridge effectively protects against suspended particles, chlorine, heavy metals, organic compounds and other contaminants down to 0.5 micron in size.



Thanks to increased contents of the selective ion-exchange fibrous material Aqualen™, this cartridge exhibits increased dirt-retention capacity while effectively removing dissolved and colloidal iron.



Contains silver in its active ionic form.

Filter life: 60,000 L
Filtration speed: 20 L/min
Barcode: 4744131011530
Shipping carton: 6 items



B520-18 IRON REMOVAL

Thanks to the last generation of Aqualen™ fiber this cartridge effectively and irreversibly filters out dissolved and colloidal iron, rust and heavy metals. CarbFiber Block technology allows eliminating organic compounds, active chlorine, microparticles down to 0.5 micron in size and accounts for fine water conditioning. Visibly reduces allergies, skin dryness and irritation after showering or taking a bath.



Due to its gradient texture and absence of "channeling effect", CarbFiber Block has increased dirt-retention capacity. Silver in its active ionic form prevents bacterial growth.

Fits a standard BigBlue 20" housing.

Can be used for apartments, private houses, cafes and restaurants.

Filter life: 40,000 L
Filtration speed: 20 L/min
Barcode: 4744131011363
Shipping carton: 6 items

[Check EU package options from your local dealer.](#)



B510-12

Gross 10 replacement filter for cold water purification in the entire home. Its unique structure and design allow the module to remove sediments, chlorine, heavy metals and other impurities from the water.



Replacement filter for the Gross 10 system, a compact version of the Gross 20. Provides whole-house cold water purification. Due to its advanced technological solutions (CarbFiber block) and design this cartridge effectively protects against suspended particles, chlorine, heavy metals, organic compounds and other contaminants down to 0.5 micron in size.



Thanks to increased contents of the selective ion-exchange fibrous material Aqualen™, this cartridge exhibits increased dirt-retention capacity while effectively removing dissolved and colloidal iron.



Contains silver in its active ionic form.

Filter life: 30,000 L
Filtration speed: 10 L/min
Barcode: 4744131011523
Shipping carton: 12 items



B510-18 IRON REMOVAL

A compact version of the B520-18. Thanks to the last generation of Aqualen™ fiber this cartridge effectively and irreversibly filters out dissolved and colloidal iron, rust and heavy metals. CarbFiber Block technology allows eliminating organic compounds, active chlorine, microparticles down to 0.5 micron in size and accounts for fine water conditioning. Visibly reduces allergies, skin dryness and irritation after showering or taking a bath.



Due to its gradient texture and absence of "channeling effect", CarbFiber Block has increased dirt-retention capacity. Silver in its active ionic form prevents bacterial growth.

Fits a standard BigBlue 10" housing.

Can be used for apartments, private houses, cafes and restaurants.

Filter life: 20,000 L
Filtration speed: 10 L/min
Barcode: 4744131011356
Shipping carton: 12 items

[Check EU package options from your local dealer.](#)



MELT-BLOWN POLYPROPYLENE CARTRIDGES



WOUND POLYPROPYLENE CARTRIDGES

PP20 (63/250)
Barcode: 4600987008820
Shipping carton: 24 items
PP5 (63/250)
Barcode: 4600987008813
Shipping carton: 24 items
PP20 (112/250)
Barcode: 4600987008844
Shipping carton: 12 items
PP20 (112/508)
Barcode: 4600987008929
Shipping carton: 6 items
PP5 (112/250)
Barcode: 4600987008837
Shipping carton: 12 items
PP5 (112/508)
Barcode: 4600987008905
Shipping carton: 6 items

Filter cartridge made of polypropylene thread wound to form a coil. Utilized to reduce sediment in water with high mechanical sediment.

Fits standard housing for filters 10"SL, 10"BB and 20"BB. Maximum working temperature +38° C (100,4°F). Effectively reduces microparticles down to 5 micron in size.

Streamlined coiling system provides increased dirt retention capacity and allows fine water purifiers last longer.

Cartridge should be replaced not less than every 6 months.

Expiration date of packaged item is 3 years in dry place under temperature conditions of 5 to 40 °C (41–104 °F).

[Check EU package options from your local dealer.](#)



MELT-BLOWN POLYPROPYLENE CARTRIDGES

112/250 — 10 mkm for cold water
Barcode: 4600987002651
Shipping carton: 15 items
112/250 — 20 mkm for cold water
Barcode: 4744131011400
Shipping carton: 15 items
112/250 — 5 mkm for cold water
Barcode: 4744131011417
Shipping carton: 15 items
112/508 — 10 mkm for cold water
Barcode: 4600987002644
Shipping carton: 15 items
112/508 — 20 mkm for cold water
Barcode: 4744131011394
Shipping carton: 15 items
112/508 — 5 mkm for cold water
Bacode: 4600987002118
Shipping carton: 15 items
63/250 — 20 mkm for hot water
Barcode: 4744131011424
Shipping carton: 50 items
63/250 — 20 mkm for cold water
Barcode: 4744131011431
Shipping carton: 50 items
63/250 — 5 mkm for hot water
Barcode: 4744131011448
Shipping carton: 50 items
63/250 — 5 mkm for cold water
Barcode: 4600987001975
Shipping carton: 50 items

Polypropylene pre-filters for reducing sand, rust, silt and other sediment in water.

Fits standard housing for filters 10"SL, 10"BB and 20"BB. Maximum working temperature +38° C (100,4°F).

Effectively reduce microparticles down to 5 micron in size. Gradient texture increases dirt retention capacity and filter life. Require replacement at least once every 6 months.

Expiration date of packaged item is 3 years under temperature conditions of 5 to 38 °C (41–100,4 °F).

[Check EU package options from your local dealer.](#)

PRE-FILTERS CARTRIDGES IRON REMOVAL

Fe (63/250)
Barcode: 4600987009018
Shipping carton: 24 items
Fe (112/250)
Barcode: 4600987009025
Shipping carton: 12 items
Fe (112/508)
Barcode: 4600987009032
Shipping carton: 6 items

Fits a standard housing for filters 10"SL, 10"BB and 20"BB. Effectively reduces microparticles down to 5 micron in size.

Streamlined coiling system provides increased dirt retention capacity and allows fine water purifiers last longer.

Cartridge should be replaced changed not less than every 6 months.

Expiration date of packaged item is 3 years in a dry place under temperature conditions of 5 to 40 °C (41–104 °F).

[Check EU package options from your local dealer.](#)

AQUAPHOR PROFESSIONAL

AQUAPHOR Professional offers a wide range of solutions for commercial water treatment applications. As a Joint Venture of Winter Engineering Ltd (Israel) and AQUAPHOR Corporation (Estonia), it combines expertise in the production of high quality RO systems of the former with technology and mass manufacturing capabilities of the latter.

We provide expertise and solutions for medical, pharmaceutical, electronics, food and other commercial applications. AQUAPHOR Professional's product lines include RO systems, Ultrafiltration, and Water Softeners.

AQUAPHOR RO-203 — HORECA

This RO-203 reverse osmosis system for commercial application features patented retentate recirculation system and unique automatic membrane scrubbing system.

Advantages of RO-203:

- recovery up to 80%
- 300 GPD filtration rate
- highly efficient, built-in electric pump
- LCD control panel
- built-in 5 L (1.3 gal) water-on-water storage tank
- optional connection to external tank
- minimal operating pressure of 0.8 bar
- 0.1 micron hollow fiber membrane post-filtration
- Size: 371x190x420 mm (15"x7"x16")
- Barcode: 4600987009063
- Set: includes
- Filtration speed:

[Check EU package options from your local dealer.](#)



AQUAPHOR RO-205

Automatic reverse osmosis system aimed at production of demineralized high-resistance water for laboratories.

Advantages of RO-205:

- **First stage:** two consecutive RO membranes
- **Second stage:** specially designed mixed bed module to provide demineralized water with resistivity of 18 megohm water (at 25°C)
- 50 GPD (of 18 megohm water)
- LCD control panel
- built-in 5 L (1.3 gal) water-on-water storage tank
- water quality control on every stage of purification
- optional connection of external mixed bed with hollow fiber cartridge (0.1 µm)
- optional connection to external tank
- minimal operating pressure of 0.8 bar
- NSF certification pending
- Size: 371x190x420 mm (15"x7"x16")
- Barcode: 4600987009063
- Set: includes
- Filtration speed:



**COMING
SOON**

AQUAPHOR WATER SOFTENERS*

Aquaphor 800 have fully automatic processor control and demonstrate exceptional salt efficiency and high iron removal. Systems employ innovative Dual Core Valves that increase regeneration rate. Efficient and durable softener tank contain extra fine mesh, tightly compacted, chlorine resistant ion-exchange resin.

Advantages of Aquaphor water softeners:

- exceptional salt efficiency
- contains 23 liters of ion-exchange resin
- removes up to 15 ppm Fe2+
- 10-year warranty
- made in the USA
- NSF certification pending
- A800 474413101169
- A1000 474413101177

*Limited sales right. Ask for more information.



APRO

UF-RO line of water purification systems is designed for medium to large enterprises with a variety of clean water applications and strict quality control requirements. UF prefilter protects RO membrane and prolongs uninterrupted supply of permeate before the maintenance is needed. Drainage water is recirculated through the prefiltration cartridges providing effective backwash. The system is assembled on a single frame, uses TDS meters and pressure controls to monitor performance and service status. System self-service is controlled by the programmable logic controller (PLC).

Applications:

- Medical
- Scientific
- Industrial
- Food
- HoReCa

UF-RO systems have been proven to work trouble free and unattended in the most challenging applications where traditional RO and other filtration processes require expensive and time-consuming maintenance. Systems are manufactured in EU and in Israel.

The abundance of high-tech electronics and medical companies, the cost of water and strict Government regulation have made Israel a highly competitive and innovative market for water purification. Winter



Engineering dominates the commercial segment with more than half of the Israeli dialysis centers, hospitals and local Fortune 500 companies' divisions using its RO purifiers.

In 2015, Winter Engineering has established a manufacturing plant in Estonia to serve customers in Europe, USA, and other countries.

We offer exclusive territories for dealers.

AQUAPHOR[®]
water filters

Westaqua (division of Electrophor)
25 Pae street,
11317 Tallinn, Estonia
sales@aquaphor.com
www.aquaphor.com